

# STACK

by  
bürotime

technical document



# STACK



Fatih Aslantaş

“Stack brings a different and innovative breath to individual storage needs in line with the changing demands of users, in line with today's modern working culture. Designed to provide solutions for storage needs in work areas ranging from home work environments to executive offices, Stack; It creates stylish spaces with its perforated panel used on its back, decorative sliding door option, elaborate round handle and foot details.”





Designed to provide solutions for storage needs in work areas ranging from home work environments to executive offices, Stack; It creates stylish spaces with its perforated panel used on the back surface, decorative sliding door option, elaborate round handle and foot details. Metal pipe profiles at the corners of the Stack combine the legs at the bottom with the fittings at the top of the cabinet, thus creating a frame image surrounding the cabinet, providing a visual integrity.







## product family \_\_\_\_\_

cabinets with perforated metal back



half door cabinets with perforated metal back



half door cabinets



cabinet



side cabinet



size chart \_\_\_\_\_

half door cabinets



5 shelves  
H 186  
W 44  
L 81,3

half door cabinets  
with perforated metal back



cabinets with  
perforated metal back



3 shelves  
H 150  
W 44  
L 81,3



2 shelves  
H 115  
W 44  
L 81,3



cabinet



2 shelves  
H 79  
W 44  
L 81,3

side cabinet with 3 drawers

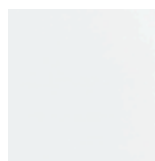




## color options \_\_\_\_\_

### melamine - doors

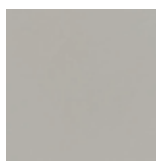
---



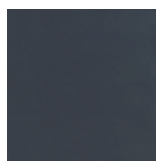
white



grey



sand



antrachite



black



samba walnut



oleaster



ash oak



hazelnut



acacia



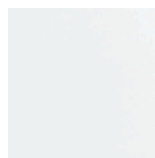
natural oak



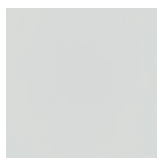
african oak

### melamine - body

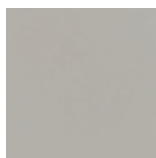
---



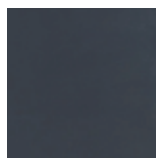
white



grey



sand



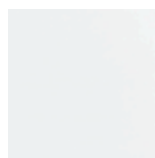
antrachite



black

### melamine - back

---



white



grey



black

\*In cabinets with melamine backs; top, back and shelf will be the same color as the body.

### perforated mdf back

---



white



grey



black

### metal profiles, plastic base frame system, handles, legs

---



white



grey



black

\*Electrostatic powder painted metal profiles are connected to the plastic base frame system from the top and to the plastic legs from the bottom. Metal profiles, base frame system, handles and legs will be the same color.